

RETURNING OF INTERNATIONAL STUDENTS TO CAMPUS FROM HOME COUNTRY

➔ New & existing international students who have obtained eVal-electronic Visa Approval Letter & Travel Authorisation from EMGS/Malaysia Immigration Department and plan to enter Malaysia from 2021 onwards must inform their travel information to USM via the International Mobility & Collaboration Centre (IMCC) for transportation assistance arrangement to pick-up at NADMA Quarantine Stations/Centres (Hotels around Kuala Lumpur) to USM after completing their quarantine period (7/10/14 days).

➔ Upon entry to the Campus, students are required to report to USM Medical and Health Facility (according to their campus) before they are assigned to isolation or surveillance block in USM hostels to complete the remaining days from the total of 14 days quarantine period. Kindly refer to **Appendix A** for the scenario involved. If they have completed their 14 days quarantine, they may proceed to their respective accommodation after reporting to the Health Facility.

➔ It is optional for NEW students to stay inside campus AFTER the remaining isolation period, where they can opt to find accommodation outside campus if they prefer. However if they prefer to be inside campus, NEW UNDERGRADUATE students have been secured 1 academic session (2 semesters) while for POSTGRADUATE students need to apply through USM Housing Accommodation Centre (HAC) email at postgrad_hac@usm.my.

Once your travel plans are confirmed, you should contact the Person in Charge (PIC) as below and kindly fill up an online form at <http://bit.ly/Form1ReturntoCampus> once you have safely checked into the quarantine centre.

1. USM Main/Engineering/IPPT Campus
- Mdm Ika : n.afiqah@usm.my
- Whatsapp (STRICTLY TEXT ONLY NO CALLS): +60 4-6532770
2. USM Health Campus
- Mr. Nesrudin : nesha@usm.my/
visakck@usm.my
- Whatsapp (STRICTLY TEXT ONLY NO CALLS): +6097672381

Scan here
to fill up the form



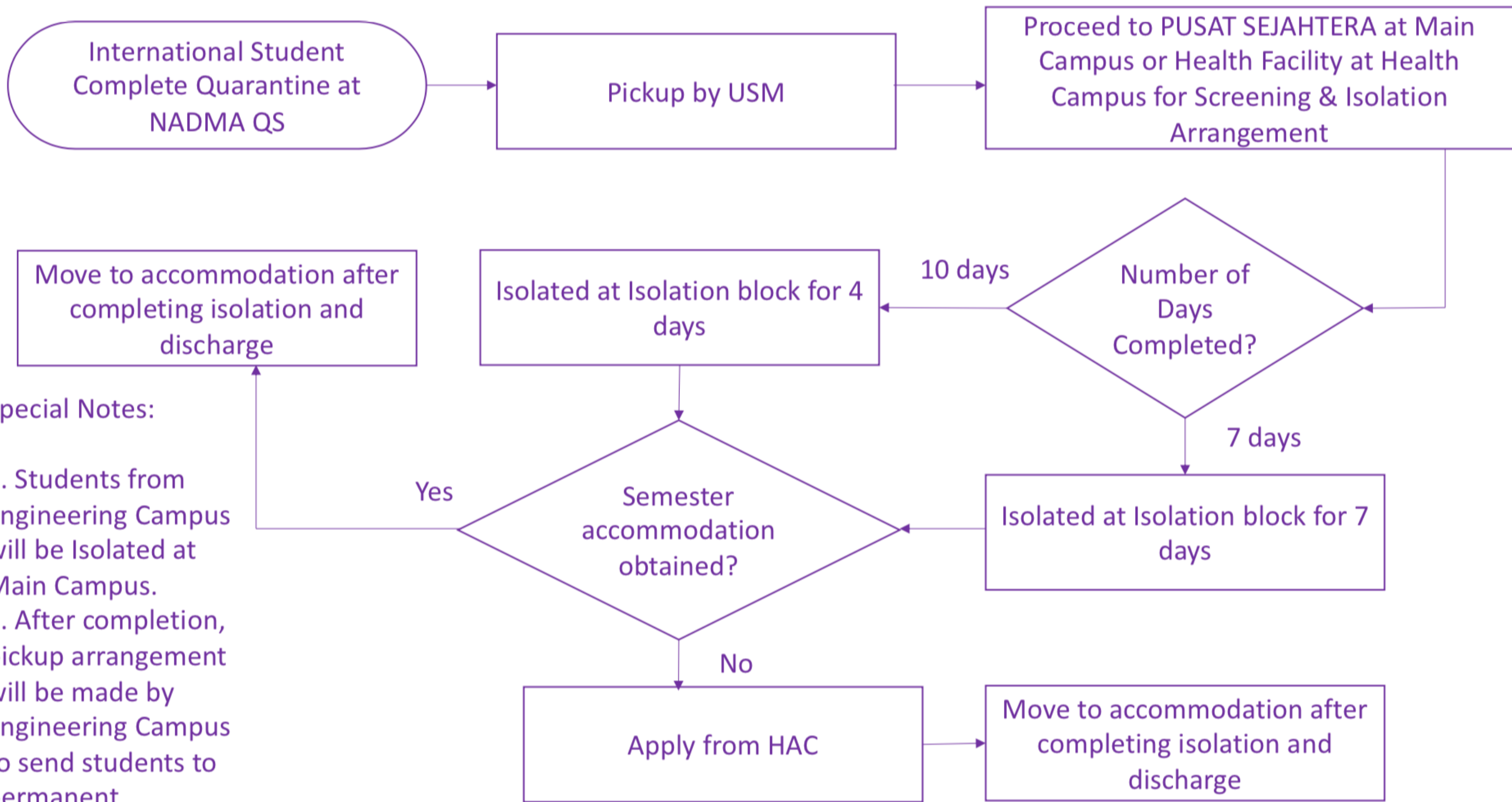
For more information pertaining to USM Accommodation, please contact the staff in charge below:

- 1) Mr Mohd Zuki Bin Arifin
Email: mohdzuki@usm.my
Tel: +6046536247
- 2) Mrs Rabiatul Adawiyah Binti Zakaria
Email: radawiyah@usm.my
Tel: +6046534456
- 3) Mrs Roslina Mohamed Idros
Email: shalina@usm.my
Tel: +6046534457

APPENDIX A

4 TYPES OF SCENARIO

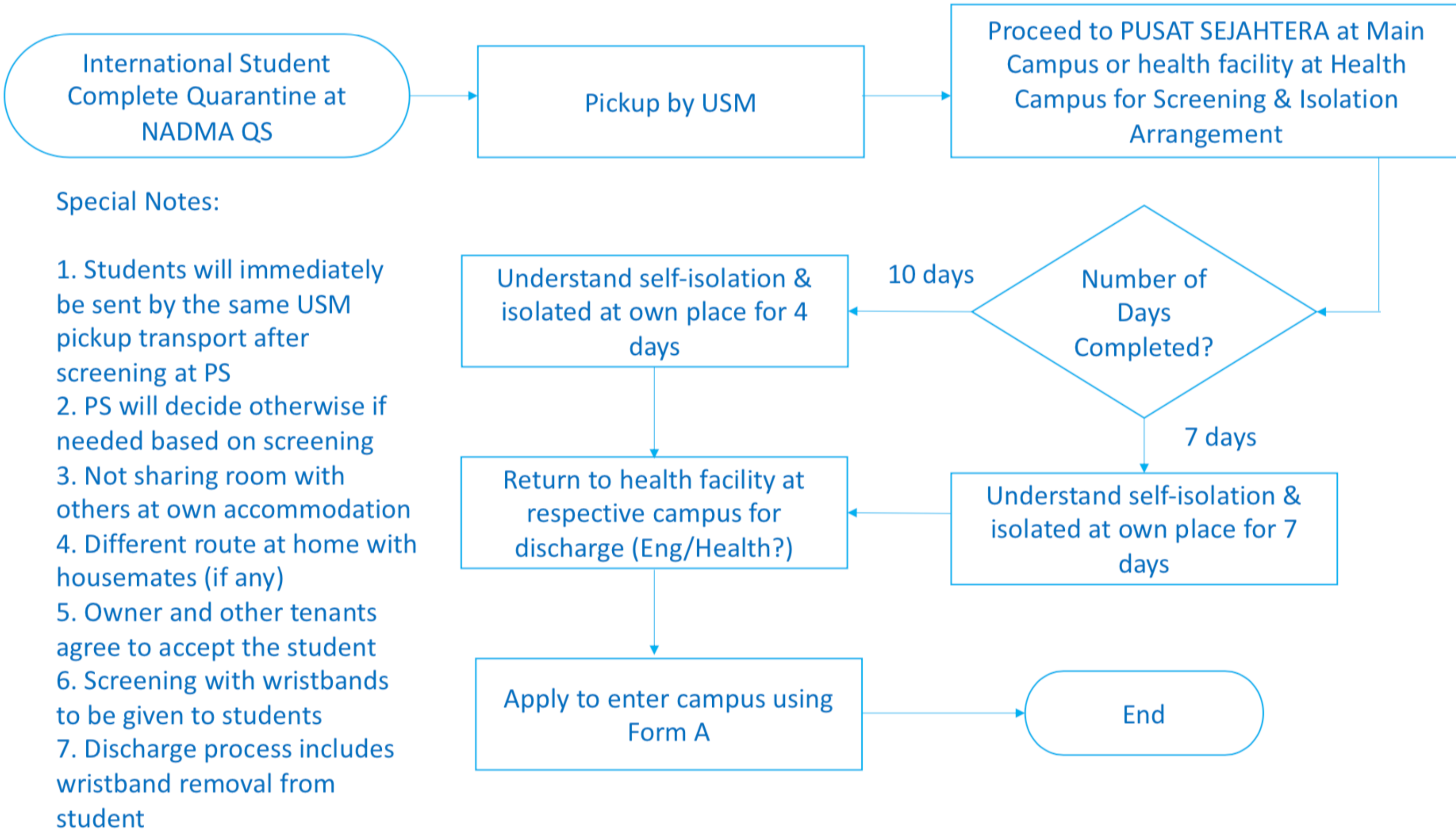
- SCENARIO 1: NEW STUDENT STAYING ON CAMPUS WITH ACCOMMODATION PROVIDED - NSOC



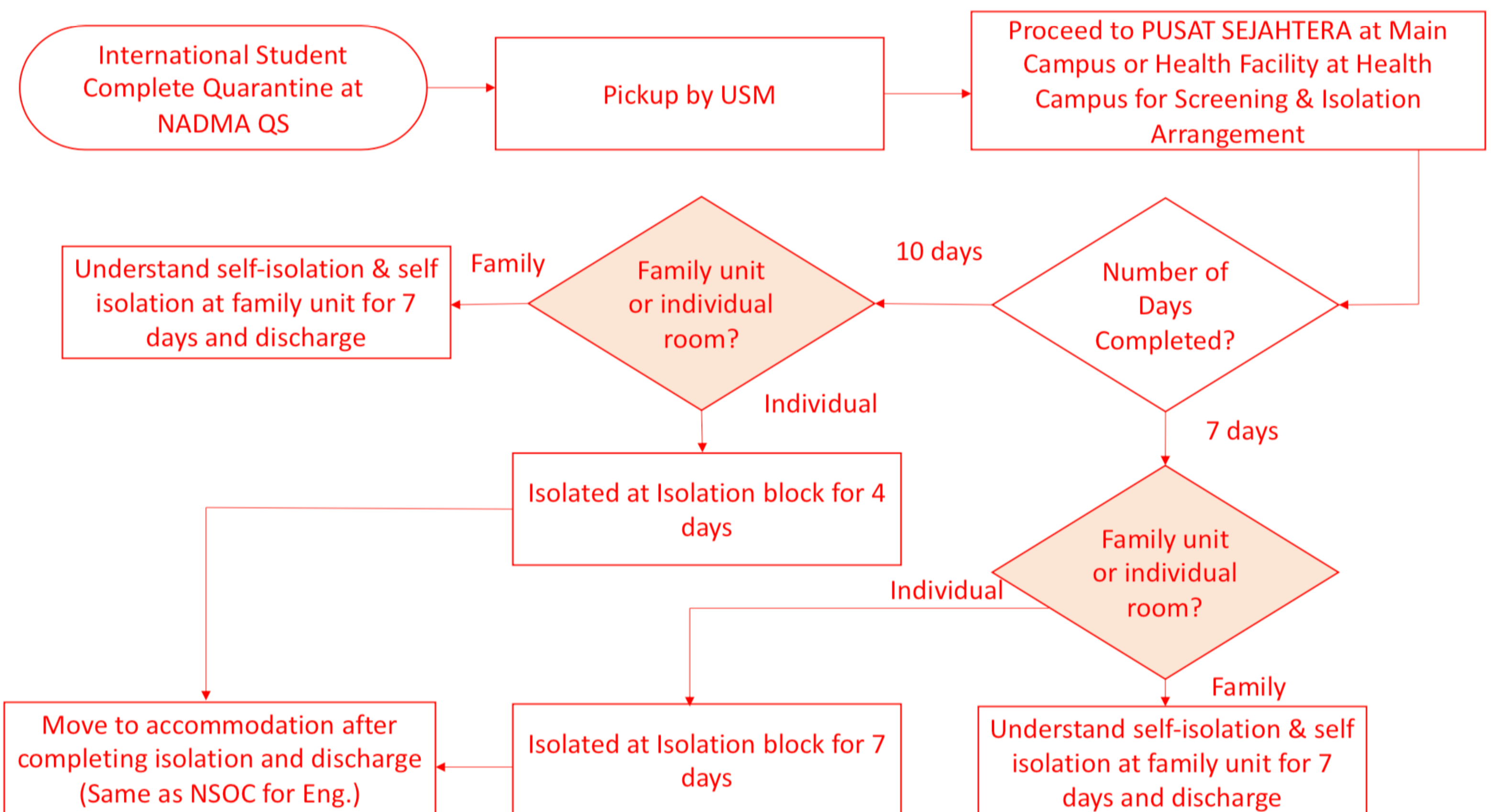
Special Notes:

1. Students from Engineering Campus will be Isolated at Main Campus.
2. After completion, pickup arrangement will be made by Engineering Campus to send students to permanent residence.

• SCENARIO 2 : NEW STUDENT STAYING OFF CAMPUS (PETAS) - NSP



• SCENARIO 3 : CURRENT STUDENT STAYING ON CAMPUS WITH ACCOMMODATION - CSOC



• SCENARIO 4 : CURRENT STUDENT STAYING OFF CAMPUS (PETAS)- CSP

International Student Complete Quarantine at NADMA QS

Pickup by USM

Proceed to PUSAT SEJAHTERA at Main Campus or health facility at Health Campus for Screening & Isolation Arrangement

Special Notes:

1. Students will immediately be sent by the same USM pickup transport after screening at PS
2. PS will decide otherwise if needed based on screening
3. Not sharing room with others at own accommodation
4. Different route at home with housemates (if any)
5. Owner and other tenants agree to accept the student
6. Screening with wristbands to be given to students
7. Discharge process includes wristband removal from student

Understand self-isolation & isolated at own place for 4 days

10 days

Number of Days Completed?

Return to health facility at respective campus for discharge (Eng/Health?)

7 days

Understand self-isolation & isolated at own place for 7 days

Apply to enter campus using Form A

End

ADDITIONAL NOTES :

USM Health facility (Pusat Sejahtera) is operating as below :

Mon – Fri : 9.00 am – 8.30 pm

Sat – Sun : 9.00 am – 5.00 pm

FREQUENTLY ASKED QUESTIONS

Q1: PETAS students that need to complete remaining quarantine days after NADMA (10 or 7 days), can they go straight to their own homes and declare the next day at Pusat Sejahtera (PS) if they arrive after PS operating hours? Or should they be isolated at the USM isolation block?

A: They will need to be isolated at their own homes, come to PS the next day after approval via form A (via campusonline) that they have to apply again on that night to Nerve Centre. Choose "Others" with remark: To complete health assessment and clearance by Pusat Sejahtera.

Q2: PETAS students who completed 14 days quarantine at NADMA, can they obtain the release letter (surat pelepasan) the next day if their arrival is after PS closes, where they can go to PS the next day?

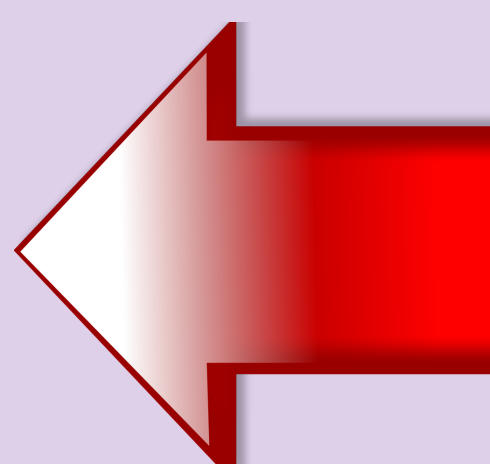
A: They will need to be isolated at their own homes, come to PS the next day after approval via form A (via campusonline) that they have to apply again on that night to Nerve Centre. Choose "Others" with remark: To complete health assessment and clearance by Pusat Sejahtera.

Q3: Students staying on campus, where do they go if PS is closed upon reaching/arrival at campus?

A: Students will be brought to an isolation block, so that they will go to Pusat Sejahtera the next day to complete the Health Assessment Tool on the remaining days (for 7 to 10 days completed at NADMA) and/or clearance (for 14 days completed at NADMA).

Q4 : I don't have CampusOnline as I am a new student, how can I apply to enter campus?

A: Students will need to submit manual Form A (Borang A) as below and email to n.afiqah@usm.my.



Form A can be downloaded here