



Corporate Profile

Other People Make Machine Talk,
We Make Them Sing.

Briefly Sophic

Sophic aims to be a global specialist in enabling Smart into Factories & Cities, worldwide via our integrated Industrial Internet of Things solutions

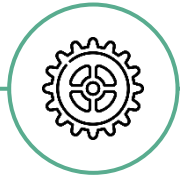


Offerings & Solutions



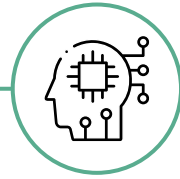
SMARTer Machine & Automation

- AMR
- Cobot
- ASRS
- UCM
- Jigs & Fixture
- Customized Machines



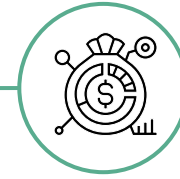
SMARTer Worker

- Digital / paperless SOP
- Task Management System (TMS)
- Remote Assistance (RA)



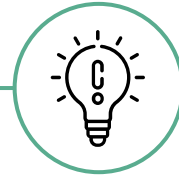
SMARTer Operation

- Andon/OEE
- Power management MES (cooperation with Digiwin)
- Traceability & RFID
- IT to OT integration
- Integrated Command & Control Centre (iCCC)



SMARTer Asset

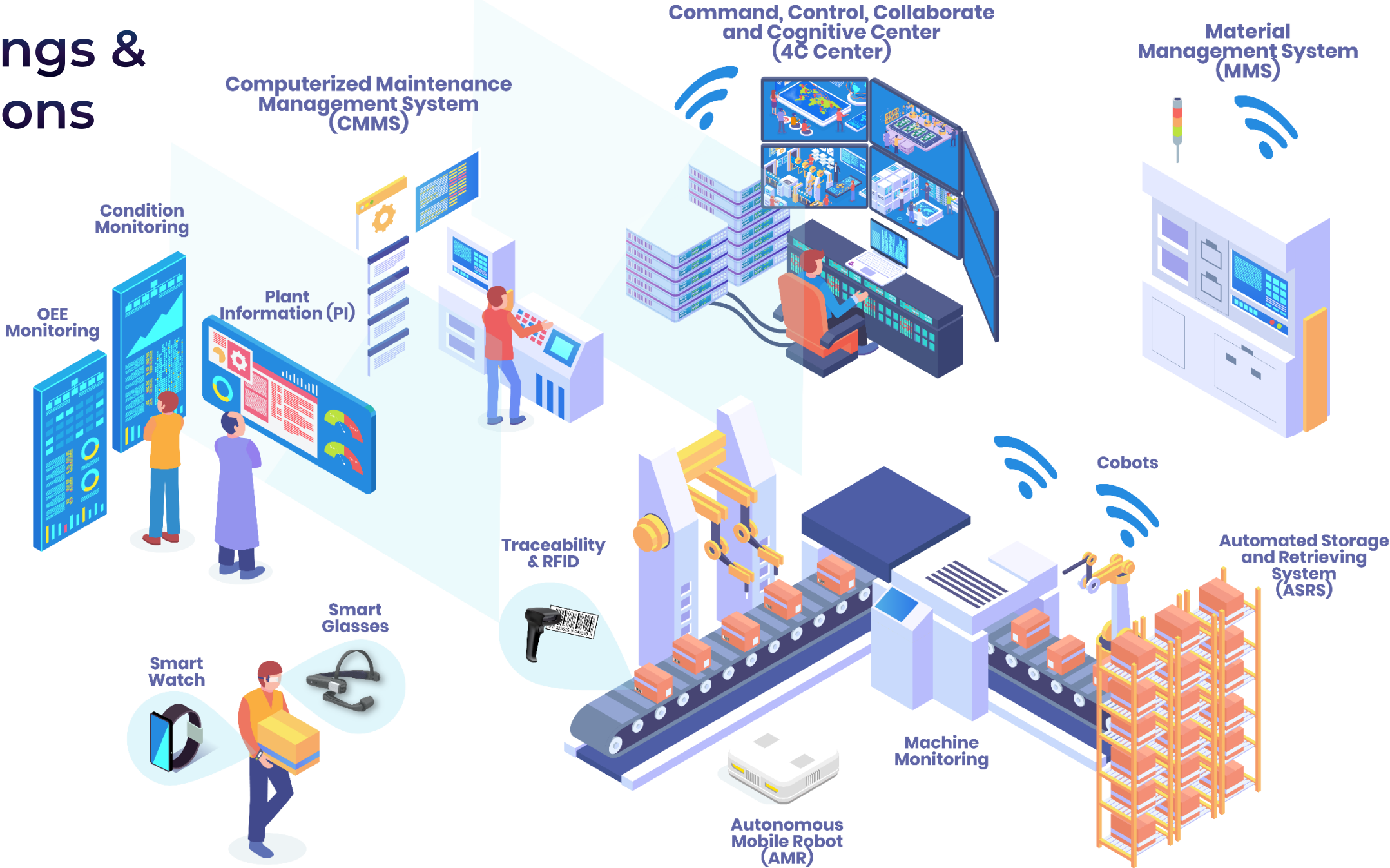
- Machine monitoring
- Condition Monitoring
- Predictive Maintenance
- CMMS
- Spare Management
- Material Management



SMARTer Talent

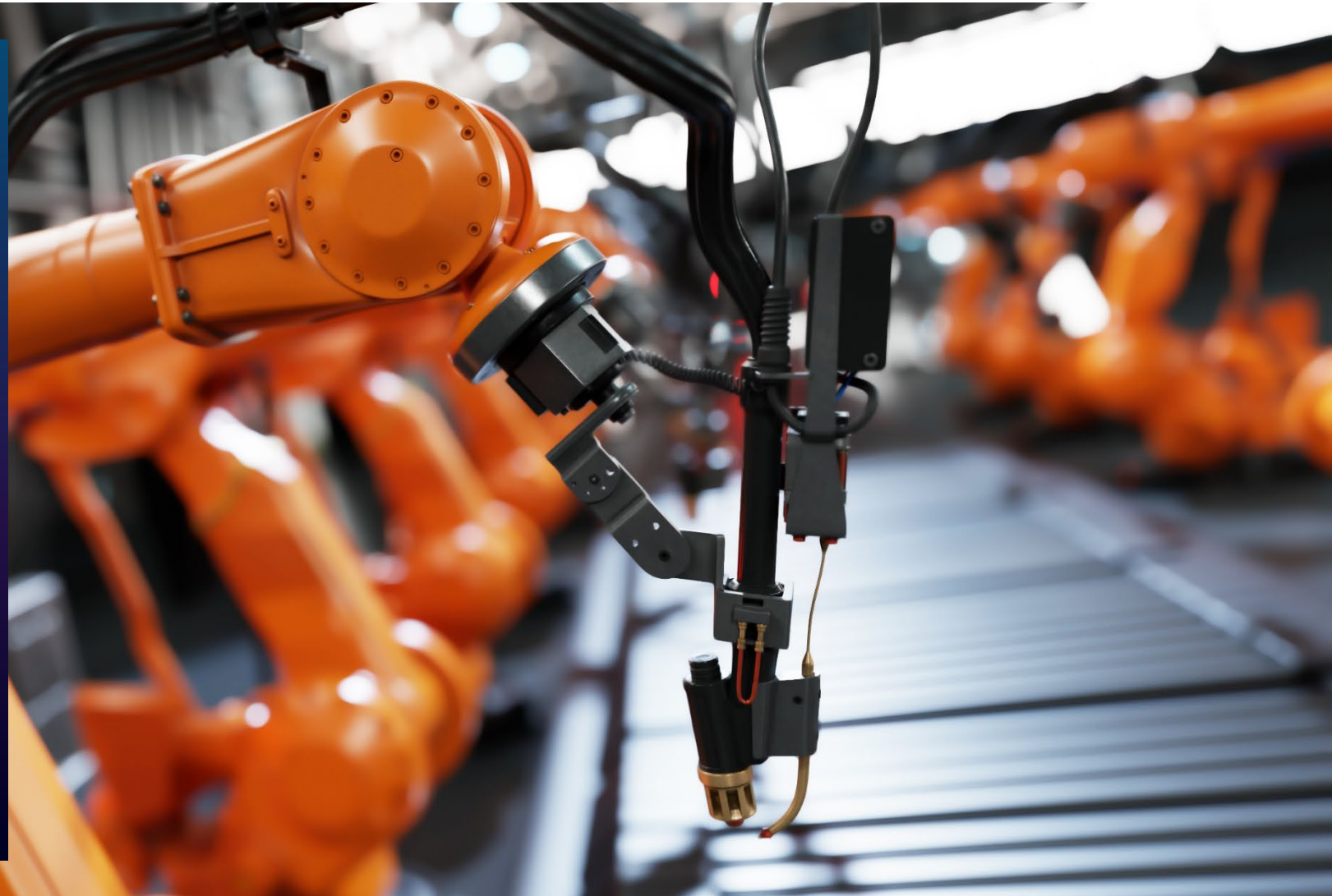
- Offshore Development Centre
- Business Process Outsourcing
- Shared Services Outsourcing
- Recruitment Process Outsourcing
- Contingent Worker Outsourcing
- Training and Development

Offerings & Solutions



SMARTer Machine & Automation

- Autonomous Mobile Robot (AMR)
- Automated Storage and Retrieval System (ASRS)
- Cobots
- Unit Count Machine (UCM)
- Jigs & Fixture
- Customized Machines



SMARTer Worker

- Digital/ paperless SOP
- Task Management System (TMS)
- Remote Assistance (RA)



SMARTer Operation

- Andon/OEE
- Power management MES
- Traceability & RFID
- Command, Control, Collaborate and Cognitive Center (4C Center)
- IT to OT integration

0

11%

```
struct group_info init_groups =
{ .usage = ATOMIC_INIT(2) };
struct group_info *groups_alloc(
gidsetsize){
struct group_info *group_info;
int nblocks;
int
```

14%

13%

KIPUSOMY
 QRYRWUM
 J RGLRAT
 BOBSTIC
 SSUNBRTL SHFY

```
struct group_info init_groups = { .usage = ATOMIC_INIT(2) };
struct group_info *groups_alloc(gidsetsize){
int
```

SMARTer Asset

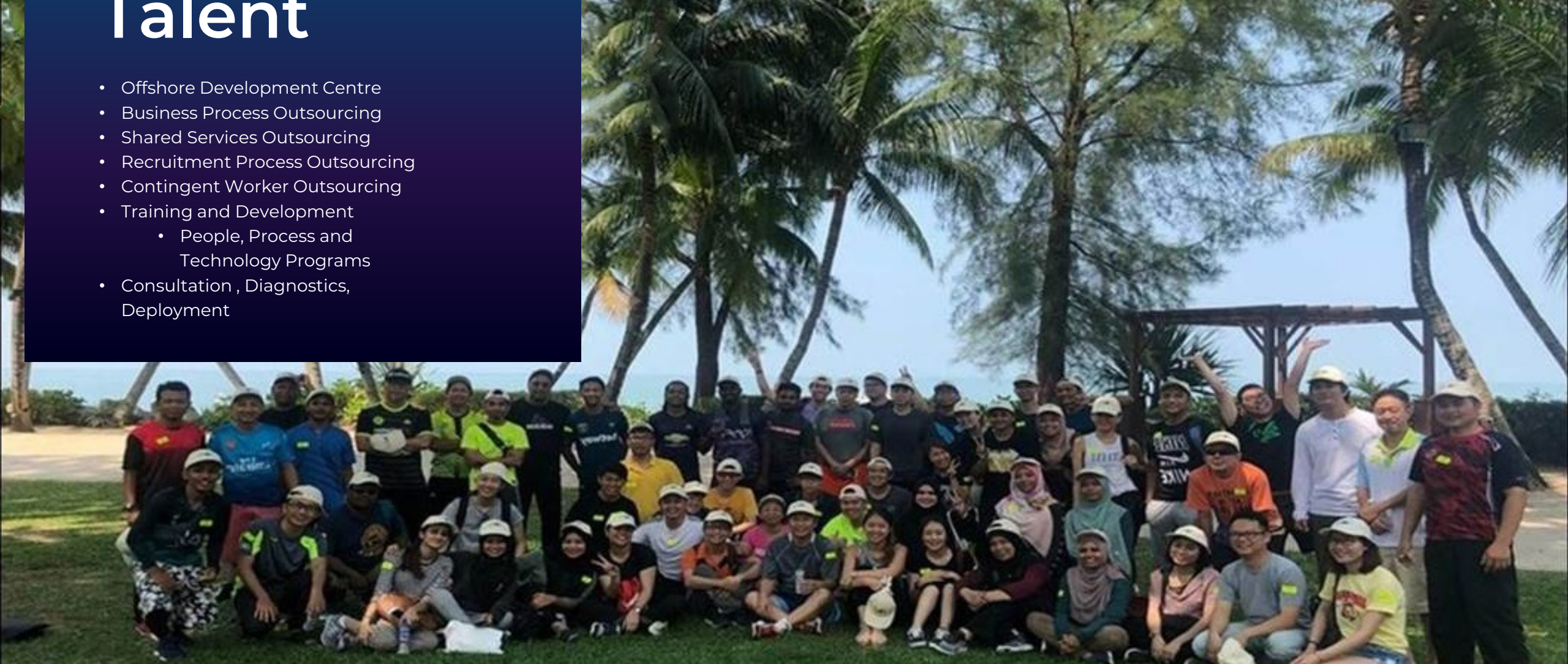
- Machine monitoring
- Condition Monitoring
- Predictive Maintenance
- Computerized Maintenance Management System (CMMS)
- Spare Part Management
- Material Management



SMARTer Talent

- Offshore Development Centre
- Business Process Outsourcing
- Shared Services Outsourcing
- Recruitment Process Outsourcing
- Contingent Worker Outsourcing
- Training and Development
 - People, Process and Technology Programs
- Consultation , Diagnostics, Deployment

Offerings & Solutions



End to End I4.0 Solutions



Sensors

Smart Devices
Smart Machines

Bluetooth
MQTT
SECS GEM
OPC UA
IO-Link
Modbus
PROFIBUS
OCR

Dell
Raspberry Pi

Smart
Connectivity

On
Prem,
Cloud or
Hybrid

Smart
Deployment

OSISOFT
System Integrator
Partner
aws
IBM
SCHAEFFLER
hadoop
SoftRock
SAP
MOVILERT
INDUSTRIES

Smart Apps
Actionable Dashboard,
Remote Assistance, AR/VR

3rd Party Apps &
Integration

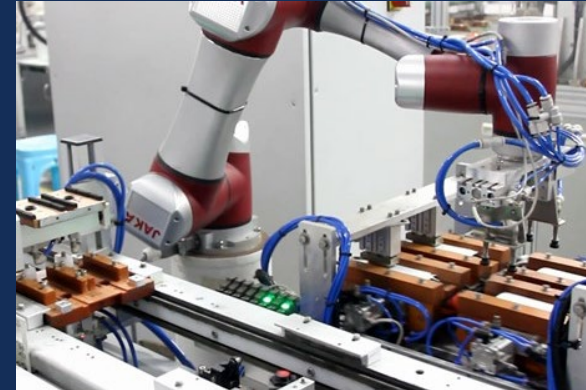
Lights-off Automation Solution



ARV (Autonomous Robot Vehicle)



Cobot at Loading/ Unloading Process



Cobot at Conveyor Process



AMR (Tow, Carry, Lift Type)

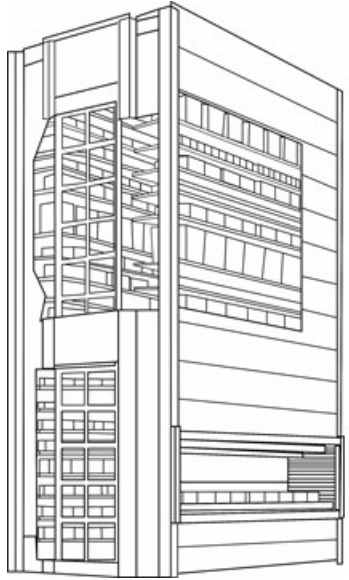


Scara Robot with Conveyor & Magnetic Linear Motors

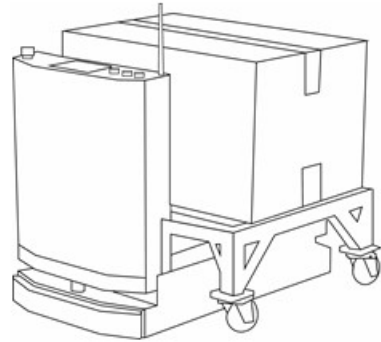


MMS (Material Management System)

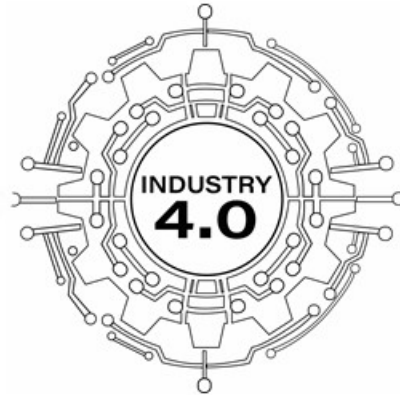
Lights-off Solution



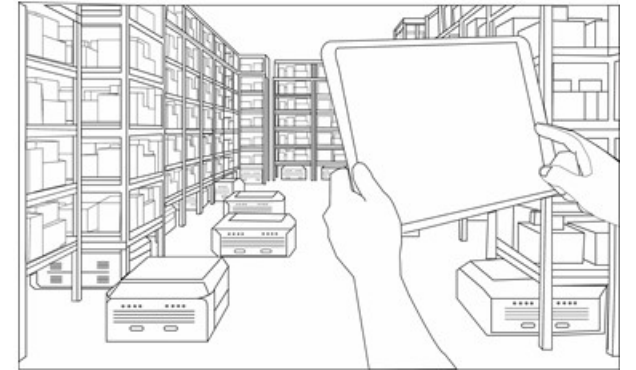
Material
Management
Solutions



Autonomous
Mobile Robot



Smart
Applications



LIGHTS-OFF
Factory

Smart Machines

Delivered

- > 20 Assembly machines
- > 10 Trim & Form handlers
- > 50 Test handlers
- > 20 Test & Tape handlers
- > 25 Inspection handlers
- > 20 Marking handlers
- > 15 wireless tester
- > 5 Dispenser machines
- 2 AMR
- Numerous Jigs & Fixtures

Expertise

- Handler Design
 - Inspection handlers, Marking handlers, Assembly machines, Pick & Place machines, Test handlers, Tape & reel machines
- Vision Inspection System
 - Mark inspection, 3D co-planarity check, Wafer die inspection, BGA inspection, Orientation check & positioning, Dimension measurement, Wire loop inspection

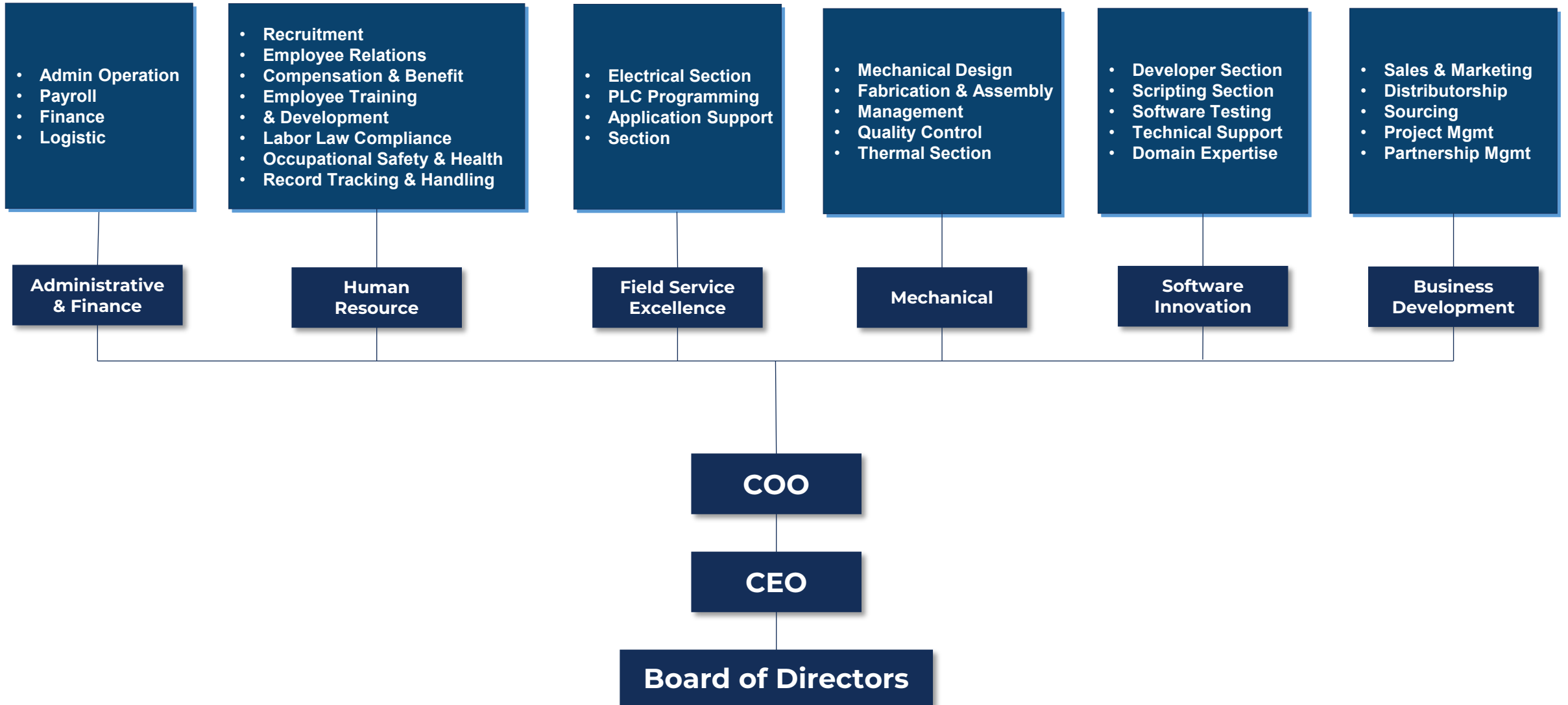


Lights-off Solution

All other logos and trademarks are the property of the respective trademark owners



Organization Chart



Things Of Internet



OT2IT, Cloud & Apps



SMART Ecosystem Partners

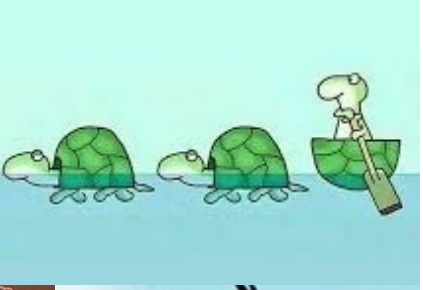
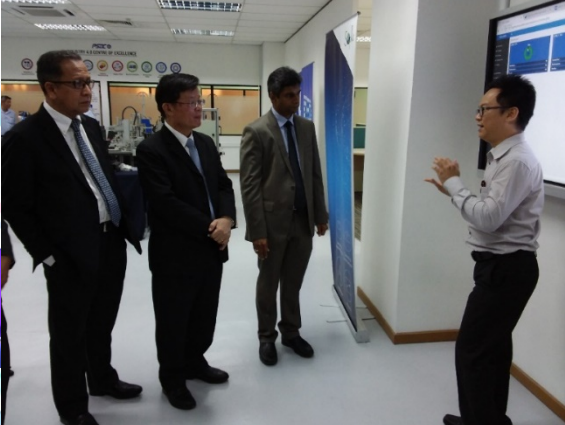
Ecosystem Liaisons





Infrastructure for further GROWTH

- In-house server for POC applications
- 6000 sq ft production floor space for machine development
- Happy family of admin, HR, mechanical, E&I, FSE & software Innovation teams



Recognition and accolades



OTHER PEOPLE
MAKE MACHINES TALK
**WE MAKE
THEM SING**





THANK YOU



www.sophicautomation.com